



Zehnder Refurbishment valve

Technical specification for supply and extract air valve

General

Zehnder supply air (exhaust air) renovation valve DN 90, ideal for all renovation projects requiring little space as well as retrofitting and new construction.

Because it can be mounted on the wall without spacing from the ceiling, only an extremely small ceiling suspension is required in the connection room. The openings can be made quickly and easily by drilling core holes.

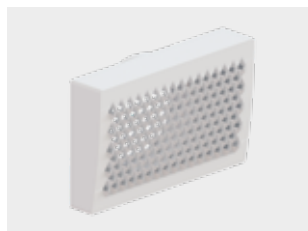
The optimised inflow characteristic reduces the secondary air component. Dirt marks around the diffuser are a thing of the past. Likewise, the air is supplied to (discharged from) the room without any draughts and at the same time with a very high throw.

Benefit

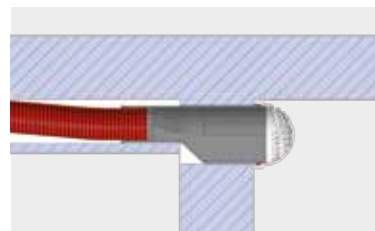
- Powerful, thanks to high air outputs of up to 40 m³/h per diffuser
- Optimum room ventilation due to large throw
Simple air volume control with optional ComfoSet in the manifold
- Easy to clean, also because there are no dust deposits thanks to the reduced secondary air component
- Can be used in a variety of ways for flush ceiling wall mounting and installation in timber and solid buildings thanks to the shortenable wall sleeve
- Minimal ceiling suspension in the connection room (e.g. hallway)
Developed for renovation projects with low space requirements as well as retrofits and new buildings



Refurbishment supply air valve, round



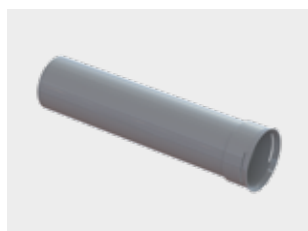
Refurbishment extract air vent, square



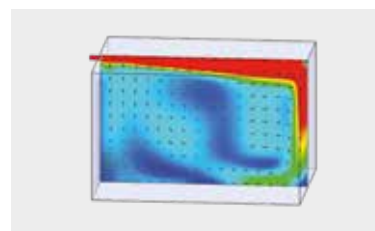
Installation



Grille housing for connecting refurbishment valve to ComfoTube Flat 51



Grille housing for connecting refurbishment valve to ComfoTube 1 x DN 90



Induction und Coandă effect

Technical specifications

Zehnder Refurbishment valve	
Material	Plastic
Color	white
Nominal air flow	max. 45 m ³ /h
Pressure loss at 40 m ³ /h	Extract air valve: 12 Pa Supply air valve: 6 Pa
Throw distance supply air valve	at 19 m ³ /h: 2.6 m at 30 m ³ /h: 5.3 m at 43 m ³ /h: 9.3 m

Tender specification

Zehnder supply air (extract air) renovation valve DN 90, ideal for all renovation projects with small space requirements as well as retrofitting and new construction.

Because it can be mounted on the wall without spacing from the ceiling, only an extremely small ceiling suspension is required in the connection room. The openings can be made quickly and easily by drilling core holes.

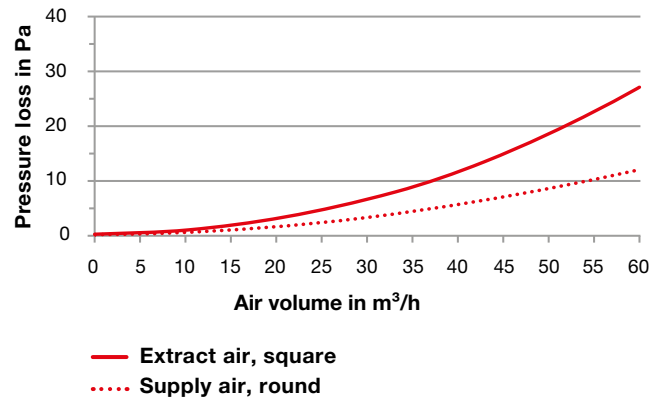
The optimised inflow characteristic reduces the secondary air component. Dirt marks around the diffuser are a thing of the past.

The air is also supplied to (removed from) the room without any draughts and at the same time with a very high throw. Air diffuser housings are available for connection to the Zehnder Flat 51 and ComfoTube 90 air distribution systems.

Article number

Description	Article number
Refurbishment supply air valve, round	990 326 254
Refurbishment extract air valve, square	990 326 253
Grill housing for refurbishment valve Flat 51	990 322 062
Grill housing for refurbishment ComfoTube 90	990 320 062

Pressure loss diagram



Dimensional drawings

