

Heating

Cooling

Fresh Air

Clean Air



Overview of models



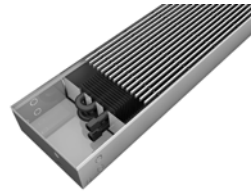
Type 14-17



Type 14-21



Type 14-25



Type 14-34



Type 14-42

Product description

Zehnder Terraline underfloor convectors use what is known as convection – the ascent of warm air masses – to create warmth that feels cosy and natural. They are particularly suitable for areas of buildings which are very difficult to heat (they can provide a barrier against cold air in front of glazed areas, for example). Floor convectors are versatile and cost-effective.

Benefits

- Quick response time
- Inconspicuous heating system
- Ideal for use in front of glazed façades
- Silent operation
- Wide range of models
- Invisible connection technology
- Diverse applications
- Compensates for cold air falling in front of full-height glazed façades
- Can be combined with Zehnder Comfosystems

Standard version with linear grille, aluminium

Model	H	D	Thermal output
	mm	mm	EN 442 ① W
UN-09-17	90	169	144
UN-09-21	90	211	229
UN-09-25	90	253	248
UN-09-34	90	337	312
UN-09-42	90	421	438
UN-11-17	110	169	145
UN-11-21	110	211	237
UN-11-25	110	253	260
UN-11-34	110	337	333
UN-11-42	110	421	438
UN-14-17	145	169	224
UN-14-21	145	211	326
UN-14-25	145	253	345
UN-14-34	145	337	494
UN-14-42	145	421	601
UN-19-17	190	169	224
UN-19-21	190	211	326
UN-19-25	190	253	345
UN-19-34	190	337	510
UN-19-42	190	421	673

H = Height

D = Depth

① = Thermal output with a length of 1000mm, measured according to EN 442, ΔT 50 K (75/65/20°C)

ZGIS-LEAF-Terraline, V0811, en, subject to change without notice